

madison
AUDUBON



Summer/Fall 2023

Setting a bold course

by Matt Reetz, executive director

It's April 1967. The Madison Audubon board of directors is gathered for a regular monthly meeting at the home of one its members. The main discussion is 62 acres of land that includes a small, rural pond well-known as an important resting place for migratory birds, especially geese and ducks. A motion is made and passes. The decision: buy the land. There is \$1,200.18 in the treasury. The board accepts the onerous task of raising the funds (later determined to be about \$30,000) and, more importantly, the enormous responsibility to protect, restore, and manage that land—in perpetuity. This will forever change the course of our organization's work.

You may recognize that rural pond as the beating heart of Madison Audubon's Goose Pond Sanctuary—a prairie pothole teeming with wildlife, now surrounded by hundreds more acres of protected land. Between Goose Pond Sanctuary and Faville Grove Sanctuary (established in 1998), nearly 2,000 acres of conserved and wonderfully restored habitats provide myriad benefits to birds, wildlife, and people.

We are proud of this work, but it is not an easy path. It requires so much time, resources, and commitment that similar organizations rarely take it. Indeed, Madison Audubon is a nationally accredited land trust, and among only three bird conservation organizations to have earned that distinction.

Over the years, our land protection has grown, thanks to a LOT of hard work, generosity, and planning by countless donors, volunteers, board, staff, and members. Our organization owes a debt to those contributions that can only be paid by building on a commitment to the land that is strategic, effective, and sustainable.

We were awestruck when we met Penny and Gary Shackelford and learned about Fair Meadows State Natural Area. Through decades of their work, diverse native habitats were restored, providing refuge for wildlife in an increasingly developed landscape. The property hosts outstanding natural communities and critical habitat for rare species. In 2023, Penny and Gary donated Fair Meadows to Madison Audubon to become its newest sanctuary, with the shared vision of protecting birds (and all wildlife) through restoration and preservation of habitats and through research and education.

I like to say we are in the joy business, but we take this work seriously. We are grateful for all you make possible for land, for birds, for people—like this exciting addition of our newest sanctuary (more on the next page). . . and all that is to come down the path!

Left: Marsh Wren | Gary Shackelford
Right: Willow Flycatcher | Arlene Koziol
Background: Crane Pond at Fair Meadows Sanctuary | Gary Shackelford

introducing

FAIR MEADOWS SANCTUARY

by Penny and Gary Shackelford, Fair Meadows resident managers

It all started with birds.

We were both attending medical school in St. Louis. On an early spring day in 1966, one of our professors took us on a “warbler walk.” Soon, we owned binoculars, Gary purchased a camera, and we were birders.

During vacation and holiday visits to Penny’s family in Fort Atkinson, we enjoyed pursuing our interests: watching and photographing birds. In 1985, with the help of Penny’s father, Al, we found a beautiful 180-acre property in Rock County close to the southern shores of Lake Koshkonong. It was a bit more than the ten acres we had in mind, but we couldn’t resist the mosaic of apple orchards, wet meadows, and oak-hickory woods. We looked forward to many leisure hours with our binoculars and camera.

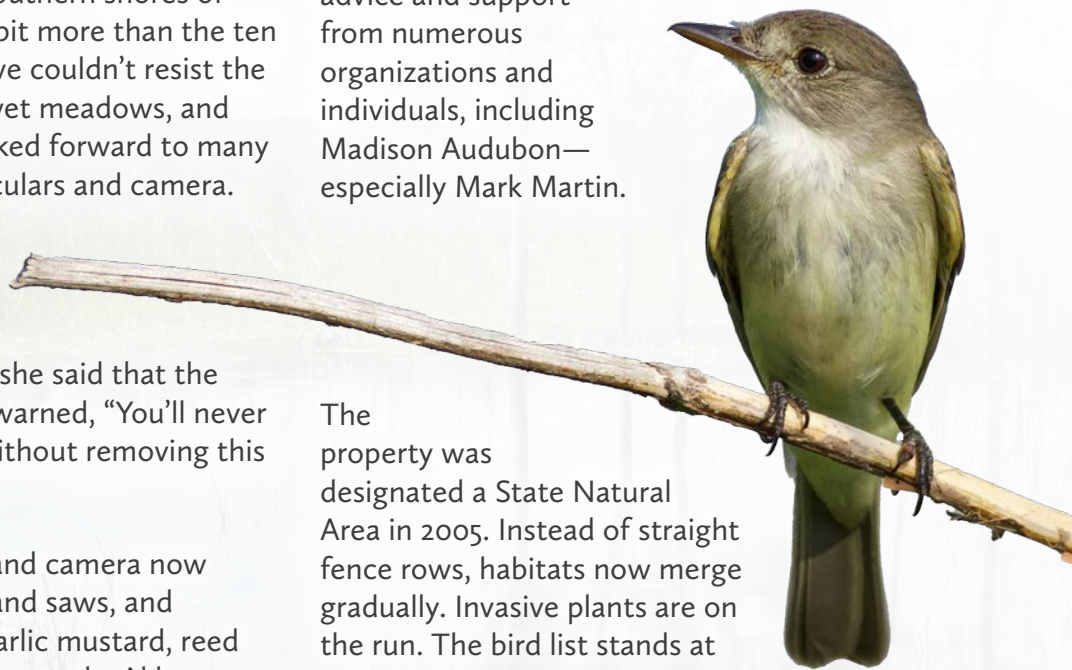
Within a few months of the purchase, a DNR forester contacted us to arrange a tour. Afterwards, she said that the woods were very nice, but warned, “You’ll never get any oak regeneration without removing this buckthorn!”

Our walks with binoculars and camera now included gloves, clippers, hand saws, and herbicide. There was also garlic mustard, reed canary grass, and more. Fortunately, Al became our local manager while we continued practicing radiology and pediatrics in St. Louis.

In 1992, we purchased 200 acres of adjacent wetland from a neighbor. It was an excellent home for ducks, rails, cranes, wrens, bitterns, and terns. This expanded the property, now called Fair Meadows, to 380 acres. The name inspiration came from a hymn that Penny learned in childhood: “Fair are the meadows, fairer still the woodlands, robed in the blooming garb of spring.”

Meanwhile, we were on a learning curve about land, habitats, ecology, restoration, and diversity. After a major offensive against buckthorn, a shelterwood harvest was accomplished. Next, we planted the first prairie in a former cornfield. A botanical survey performed by Dr. Galen Smith from the University of Wisconsin–Whitewater revealed sedge meadows and marshes filled with native plants.

In 2002, we retired from our medical careers, moved to Wisconsin, and became full-time land managers. Over the years, we have received advice and support from numerous organizations and individuals, including Madison Audubon—especially Mark Martin.



The property was designated a State Natural Area in 2005. Instead of straight fence rows, habitats now merge gradually. Invasive plants are on the run. The bird list stands at 196 species.

In planning for the future, we looked for an organization that shared our vision—to protect and enjoy birds through restoration and preservation of habitats and through research and education. We found that in Madison Audubon. We are thrilled that this organization will nurture Fair Meadows for years to come.

To preserve fragile habitats, Fair Meadows is only open to visitors during special events. Learn more at madisonaudubon.org/fair-meadows.

Continuing on the path forward

by Matt Fortney, president of the board of directors



Blazing star | Mike Budd/USFWS Midwest

If you read the story about how Madison Audubon began land protection work (page 2), you know that our organization has a strong history of hard-workers and forward-thinkers who aren't afraid to blaze a trail that promises a better future for birds and people alike.

Those big, important decisions made this the organization it is today. With the dedication and continued support of our members, we are positioned to keep restoring more habitats, protecting more birds, educating more kids, and welcoming more bird lovers to join us.

Last December, when Madison Audubon's board of directors voted to seek a new name, Seattle was the only other chapter (and the first) that had also committed to doing so. Over the past months, a significant number of the country's largest chapters have too: Chicago; Portland, OR; Washington, DC; New York City; Golden Gate; and Detroit; to name a few. Many more chapters of all sizes are committed to changing their names, too.

Since announcing the board's decision, we've been met with a great deal of kindness and encouragement from our members—thank you. Every time we've asked, you have shared feedback, suggested name ideas, and motivated us along this path to find a new, and better, name to ensure the future of our crucial conservation work.

We've taken that to heart. We continue to meet with numerous chapters around the country and in our region, seeking a shared name to unite us and strengthen the work we collectively do.

Between your input, the work of our name selection committee, and the board of directors, there has been incredible discussion around what the new name will be. I'm thrilled to report that we're just steps away from presenting a new name to our members, and that you'll be able to vote on it soon (see page 12).

We can't wait to blaze this trail with all of you—with a new name, together.

To learn more about the name change process, visit madisonaudubon.org/new-name.

Blooming prairies, booming aphids

by Samuel Guerra and the 2023 Faville Grove intern crew

As the prairies at Faville Grove burst with colorful blooms each week, we can't help but notice swarms of aphids covering every other stem. The sanctuary boasts a broad collection of insects: from dragonflies to butterflies, leafhoppers to grasshoppers, spittlebugs to beetles, and many more. While we've appreciated this diversity, one thing has become clear: it's the summer of the aphid at Faville Grove.

Aphids congregate along stems and leaves, sucking out the watery sap to harness the sweet products of photosynthesis. As we've learned, ladybugs and aphids, both native insects, go hand in hand. A single ladybug is capable of eating thousands of aphids in its lifetime, so it makes sense that we have noticed the booming ladybug population in response to the unusually high number of aphids.

Once we started to notice that the stems of plants act as their own microecosystems, it was exciting to look at how aphids interact with other species. Where the aphids were filtering sap from the prairie's plants, ants followed to

harvest the honeydew that the aphids excreted. We also started to see aphids emerging with wings, which usually indicates that they have overcrowded the area and are getting ready to disperse and find a new food source. The overabundance of aphids can only last so long before they deplete their resources and are removed by ladybugs. The ladybug population will also eventually crash once the aphids leave.

Insects can be just as charismatic as birds and plants, and are not only an important part of the prairie ecosystem, but also an important part of learning to enjoy that ecosystem. Variation in insect populations is not necessarily a source of concern, because the creation of optimal habitat allows predatory insects to level out pests. Learning about these interrelationships has made us realize that the summer of the aphid quickly became the summer of the ladybug, and the ant, and the insectivores, too. With tremendous habitat at Faville Grove, there's plenty of room for blooms and booms.

Prairie plants covered in aphids, hunted by ladybugs.
photos by Joshua Brazee (left) and Samuel Guerra (right)

Together with our members, we work to protect and improve habitat for birds and other wildlife through land acquisition and management, education, and advocacy.

MADISON AUDUBON STAFF

Matt Reetz, *executive director*
Becky Abel, *director of philanthropy*
Carolyn Byers, *director of education*
Brenna Marsicek, *director of communications and outreach*
Mark Martin & Susan Foote-Martin, *Goose Pond managers*
John Minnich, *financial manager*
David Musolf & Roger Packard, *Faville Grove resident managers*
Mickenzee Okon, *educator*
Emma Raasch, *Goose Pond ecological restoration technician*
Penny & Gary Shackelford, *Fair Meadows resident managers*
Graham Steinhauer, *Goose Pond land steward*
Kaitlin Svabek, *communications coordinator*

BOARD OF DIRECTORS

Matt Fortney, *president*
Pat Clark, *vice president*
Jeff Galligan, *secretary*
Tim Norris, *treasurer*
Olivia Dunn
Patrick Eagan
Joanne Jones
Darcy Kind
Matt Krueger
Lisa Lepeak
Dexter Patterson



A lack of rainfall shapes the landscape

by Mark Martin, Susan Foote-Martin, Graham Steinhauer, & Emma Raasch, Goose Pond team

In early July, Steve Ackerman and Jonathan Martin from the UW–Madison Department of Atmospheric and Oceanic Sciences wrote in an article for the *Wisconsin State Journal*: “The 61 days of May and June 2023 were the driest May and June ever, with a paltry 2.01 inches of total precipitation falling.” That’s 7.37 inches below normal.

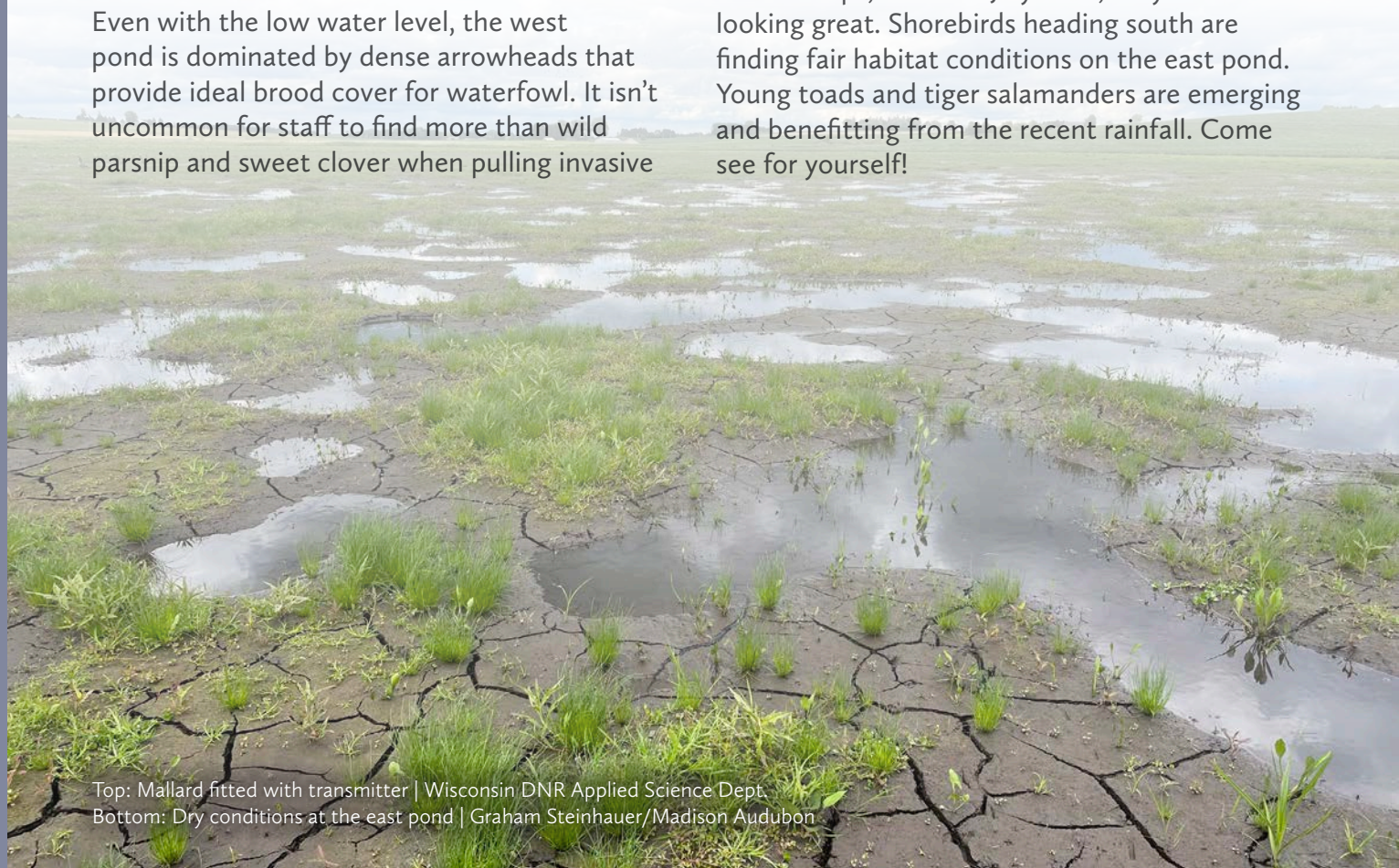
At the UW Arlington Research Station, located 1.5 miles southeast of Goose Pond, the normal precipitation for both months is 9.38 inches. Only 1.92 inches were recorded. On May 1, precipitation at Goose Pond was one inch ahead of normal for the year. In July, weather conditions changed, and rainfall totaled 6.8 inches.

Last winter, the east pond was dry, and very little water remained in the west pond. Strong spring runoff conditions raised the west pond to over two feet. However, at the end of July, the west pond was very shallow and may go dry without significant rains. The east pond has been dry except for sheet water following heavy rainfall.

Even with the low water level, the west pond is dominated by dense arrowheads that provide ideal brood cover for waterfowl. It isn’t uncommon for staff to find more than wild parsnip and sweet clover when pulling invasive

plants—we have been met with the sudden whoosh of frantic wingbeats as a duck flushes from her nest. In total, we located eight Mallard nests at Goose Pond and three at Erstad Prairie, plus two Blue-winged Teal nests between both properties. Flushing hens isn’t just good for an adrenaline boost! After we noted nest locations, the DNR visited and equipped four brooding female Mallards with GPS transmitters to learn more about hen movements and evaluate duck productivity across a range of priority habitats.

During drought conditions, a little bit of precipitation reminds us of the bounty of life at the sanctuary. Even the prairie plants with their deep roots were looking a little fatigued and completely crispy on our drier hilltops, but with July rains, they have been looking great. Shorebirds heading south are finding fair habitat conditions on the east pond. Young toads and tiger salamanders are emerging and benefitting from the recent rainfall. Come see for yourself!



Top: Mallard fitted with transmitter | Wisconsin DNR Applied Science Dept.
Bottom: Dry conditions at the east pond | Graham Steinhauer/Madison Audubon

Thank you for your generosity! *New Madison Audubon donors May–July 2023*

Our amazing supporters make so much good possible. Below are brand new donors and donations in tribute. Find a full list at madisonaudubon.org/2023-donors. On paper or online, we appreciate YOU and your support.

Kimberly Ball
Anson Beckwith
Tracy Allan Bishell
Sandra Black
Susanna Bradley
Julianne Brown
Marlene Buechel
Kein Burton
Cody Carr
Ross & Caye Christensen
Robert Conley
Jonathan Dayton
Kathy Deinlein
Lorna Doering
Leonard Doom
Paula Doyle
Sherry Enz
Jamie Fairfield
John Fedell
Bill & Lora Forrest
Evelyn Fox
Gail Frasier
Gillian Gehri
Clifford Gidlund
Lynn Hobbie
Gary Hunsberger
Bethany Huwe
Margaret Ingram
Lisa Jacobs
Darlene Jakusz
Scott Kampmeier
Ivan & Milka Knezevic
Sara Knueve
Dan Kolberg
Glenn Krieg
Diana Kruse
Terry & Sue Larson

Michael Leaderman
Janis Littel
Constance Matzat
John McLean
Paige Michels
Anne & Chuck Nahn
Denise Nerad
Richard Neumann
Mark & Laura Osinski
Jean Parks
Kush Paul
Poynette High School
Conservation Club
Carol Prah
Anne Pryor
Todd Punke
Amanda Ramaker
Thomas Ramsden
Jessica Rice
Lucerne Rice
Brenda Ryther
Stacey Schaefer
Jessica Seiders
Lynne Siegfried
Sunny Boutique
Suzanne Teubert
Dee Traxler
Charmaine Untiedt
Tracy VanTassell
Brian Vigue
Carolyn White
Lyn & Lyman Wible
Ernst & Connie
Wiegshaus
Thomas Wilczak
Diane Wilkinson
Christina Wood

IN HONOR OF...

Barbara Ingram
by Margaret Ingram

Mark Martin &
Susan Foote-Martin
*by Doris Rusch & Bill
Mitchell, Don Schmidt,
Levi & Janet Wood,
Barbara Zellmer*

David Musolf &
Roger Packard
by Barb & Paul Noeldner

Brand Smith
by Alliant Energy Foundation

Judy Stang
by Barbara Widder

IN MEMORY OF...

Jerry Borseth
*by Ross & Caye
Christensen*

William L. Hilsenhoff
by Leslie Hilsenhoff

Eunice Lewis
by Dee Traxler

Amy Washburn Leary
by Mary Washburn

Marcia MacKenzie
*by Becky Abel, Ross
& Caye Christensen,
Kathleen Falk, Sara
Knueve, Glenn Krieg,
Madison Community
Foundation, John Minnich,
Roger Packard & David
Musolf, Amanda Ramaker,
Brenda Ryther, Ernst &
Connie Wiegshaus, Janis
Zimmermann*

W. Carson Mettel
*by Anne & Chuck Nahn,
Lyn & Lyman Wible*

Ron Paska
by Pat Paska

Mary Poser
by Helen Poser

Lucille Stephani
by Lynn & John Stephani

Shirley Toomey
*by Wallace & Peggy
Douma*

Cheryl Tyndall
by Marilyn Meade

Nancy Washburn
*by Roger Packard & David
Musolf, Mary Washburn*

Gilbert Wilson
by Carole Wilson

EXPERIENCES & COURSES: AUTUMN 2023

Expand your knowledge and build your skills

Registration for most courses and events opens to Madison Audubon members six weeks in advance. Remaining seats will open to the public two weeks later.

MONARCH TAGGING

Learn about the amazing life history, migration, and conservation needs of monarch butterflies. We will teach you how to safely catch, handle, tag, and release a monarch, all in the name of science and love of nature. Taught by Mark Martin and Graham Steinhauer, in partnership with Monarch Watch.

Sessions: EARLY SEPTEMBER. Visit our website for times, dates, and additional details. **\$10/adult, \$5/youth.**

BEHIND THE SCENES AT THE CHICAGO FIELD MUSEUM

Experience birds and explore the Chicago Field Museum like never before! Join us for an intimate, behind-the-scenes tour of the museum designed specifically for Madison Audubon, with special presentations and opportunities to see the specimen bird collections, the Bird Lab, and more. Transportation provided.

Session: OCTOBER 16, 7 AM–7 PM. Visit our website for additional details. **\$200/person.**

NATURE JOURNALING: AUTUMN LEAVES

Learn how to create a nature journal page by observing, sketching, and writing about autumn leaves. This can be a powerful way to notice new things and to wonder more deeply about nature. Taught by Amy Schleser.

Class: OCTOBER 1, 1–3 PM. **\$20/person.**

WHAT THE DUCK?! GETTING STARTED WITH WATERFOWL IDENTIFICATION (2-PART SERIES)

Late fall through winter is prime time to view dozens of waterfowl species that migrate through Wisconsin. Before you know it, you'll be picking out a Redhead hiding in a raft of Canvasbacks! Taught by Caitlyn Schuchhardt.

Class: NOVEMBER 2, 7–8:30 PM. Trip: NOVEMBER 5, 9–11 AM. **\$20/person.**

A BIRDER'S DOZEN: BIRD IDENTIFICATION FOR BEGINNERS, WINTER EDITION (2-PART SERIES)

A great introductory class for anyone who loves to watch birds at home or in their neighborhood, and wants to learn more about the most common species seen and heard. Taught by Maggie and Bob Honig.

Class: NOVEMBER 9, 6–8 PM. Trip: NOVEMBER 11, 1–3 PM. **\$20/person.**

Register and find more information at: madisonaudubon.org/events

Upcoming volunteer opportunities

BIRD COLLISION CORPS: FALL SURVEY PERIOD

The Bird Collision Corps is a group of volunteer citizen scientists who study where bird-window collisions are happening in the Madison area and help building owners find solutions. Training, supplies, and support are provided.

Weekly survey shifts: SEPTEMBER 11 THROUGH NOVEMBER 1

More information: madisonaudubon.org/bcc

SEED COLLECTING AT THE SANCTUARIES

Join us for a leisurely autumn day (or a few) out at the sanctuaries for some fun, hands-on conservation work!

More information: madisonaudubon.org/seed-collecting

GOOSE POND SANCTUARY

SATURDAYS 9:30 AM–12 PM, SEPTEMBER 6 THROUGH NOVEMBER 4

Meet at W7503 Kampen Road, Arlington. To join, email gsteinhauer@madisonaudubon.org

FAVILLE GROVE SANCTUARY

WEDNESDAYS & SATURDAYS 9:30 AM–12 PM, SEPTEMBER 9 THROUGH NOVEMBER 4

Meet at W7480 Prairie Lane, Lake Mills. For questions, email faville@madisonaudubon.org

A coo-coo-cool reminder:

Madison Audubon is a chapter of National Audubon, but we are actually different organizations. We share similar missions, but our staff, sanctuaries, programs, communications, and funding are all separate. When you support Madison Audubon, you make a big difference for birds in southern Wisconsin and beyond. Please consider a direct donation to Madison Audubon to support land restoration, bird protection, youth education, and engagement right here in our community. Thank you!



AUTUMN 2023 CALENDAR

Below are our upcoming field trips and programs. Each opens for registration six weeks prior to the event. You can find the full list of all field trips and events on our website, including pop-up outings that may be scheduled after the newsletter goes to print.

Please register at madisonaudubon.org/events for upcoming events you wish to attend so we can share trip information, weather-related adjustments, and more.

EXPLORE OUR NEWEST SANCTUARY!

FAIR MEADOWS OPEN HOUSE

Join us to explore Fair Meadows, which is normally closed to the public! Each of these days, we will have Madison Audubon staff on site to welcome you with a map, suggest a few hiking trails to explore independently, and answer your questions.

Dates: Sep. 14, 15, 16; 7 AM–7 PM
Location: Fair Meadows Sanctuary (Milton)
Led by: Madison Audubon

BIRDABILITY WEEK

ROBINS BY THE THOUSANDS!

Experience the phenomena of large flocks of American Robins streaming into their overnight roost, meet fellow bird enthusiasts, and learn about the natural history of this beloved species. Designed to be accessible, these drop-in “sit” sessions require minimal walking.

Dates: Sun., Oct. 15, 5–7 PM; Sat., Oct. 21, 5–7 PM
Location: Jenni & Kyle Preserve (Madison)
Led by: Maggie & Bob Honig

FAMILY FIELD TRIP SERIES: HIBERNATION STATION

Date: Sat., Sep. 9, 10–11 AM
Location: Warner Park (Madison)
Led by: Carolyn Byers

A SWIFT NIGHT OUT

Date: Fri., Sep. 15, 6–8 PM
Location: Blessed Sacrament Church (Madison)
Led by: Madison Audubon, BIPOC Birding Club of Wisconsin, Feminist Bird Club Madison Chapter, Wisconsin Chimney Swift Working Group

BEYOND BACKYARD BIRDING

Date: Sat., Sep. 16, 7:30–9:30 AM
Location: Cherokee Marsh (Madison)
Led by: Ashley Olah & Jen Schneiderman

BIRDS OF FAIR MEADOWS (FULL, WAITLIST AVAILABLE)

Date: Sun., Sep. 17, 8–11 AM
Location: Fair Meadows Sanctuary (Milton)
Led by: Penny & Gary Shackelford

BIRDING BY BIKE

Date: Tue., Sep. 19, 5–7 PM
Location: Glacial Drumlin Trail (Cottage Grove)
Led by: Sprocket Hanks & Brenna Marsicek

LAND TRUST DAYS: FALL PRAIRIES AT FAVILLE GROVE

Date: Sun., Sep. 24, 9–11 AM
Location: Faville Grove Sanctuary (Lake Mills)
Led by: Roger Packard & David Musolf

FALL SIT

Date: Sun., Oct. 8, 4–6 PM
Location: Tenney Park (Madison)
Led by: Kaitlin Svabek

FAMILY FIELD TRIP SERIES: OH, DEER!

Date: Sat., Oct. 14, 10–11 AM
Location: Orchid Heights County Park (Middleton)
Led by: Carolyn Byers

SCOPE DAY AT GOOSE POND

Date: Sun., Oct. 29, 1–3 PM
Location: Goose Pond Sanctuary (Arlington)
Led by: Mark Martin & Susan Foote-Martin

AN EVENING OF CEMETERY BIRDING

Date: Wed., Nov. 1, 4–5:30 PM
Location: Forest Hill Cemetery (Madison)
Led by: Kaitlin Svabek

BIRDING LAKE MICHIGAN

Date: Sat., Nov. 4, 7 AM–6 PM
Location: See website for details
Led by: Pat Ready & Steve Thiessen

FAMILY FIELD TRIP SERIES: TURKEY TIME

Date: Sat., Nov. 11, 10–11 AM
Location: Warner Park (Madison)
Led by: Mickenzee Okon

Registration, info, and updates at madisonaudubon.org/events.

A big year for Wisconsin's eagles

by Brenna Marsicek, director of communications & outreach

This June and July, the Bald Eagle Nest Watch (BENW) volunteers submitted their final reports of the year. The eaglets have taken flight, marking the end of a wonderful and productive nesting season for eagles in southern Wisconsin.

This year, of the nests monitored by our volunteers, 86% successfully raised young: 210 brand new eagles took to the skies! This robust number follows on the heels of 2022's disheartening nesting season, during which 65% of the nests in our program failed (likely due to Highly Pathogenic Avian Influenza). What a marvelous turnaround.

A few highlights of the BENW season included:

Historic fledging: Our volunteers documented three eaglets fledging from two nests in Milwaukee County—the first recorded fledglings there in over 120 years!

Our biggest year yet: Through continued growth in our southern program, and partnerships with 1000 Islands Environmental Center, The Ridges Sanctuary, Woodland Dunes Nature Center, Nature's Guide Independent Naturalist Service, and Beaver Creek Reserve, we had over 400 volunteers monitor 206 active nests in 39 counties!

Eagles in the news: BENW was featured in *Milwaukee Lifestyle Magazine*, *Milwaukee Journal Sentinel* (3 times), *Wisconsin State Journal*, Wisconsin Public Radio, and other media outlets.

Thank you to all of our volunteers, in particular Drew Cashman, for their incredible work. It is such a delight to share stories, swap photos, and learn more about Wisconsin's eagles with you!



Bald Eagle family | Arlene Koziol

OTHER PROGRAM UPDATES

BIRD COLLISION CORPS (BCC)

- 89 volunteers
- 50 buildings surveyed
- 373 volunteer hours
- 107 birds documented as hitting windows
- Mitigation Efforts:** American Family Insurance and Holy Wisdom Monastery installed window treatments at areas that BCC volunteers found to be collision hotspots, which should dramatically reduce bird deaths. Thank you, AmFam and Holy Wisdom!

KESTREL NEST BOX MONITORS

- 119 volunteers
- 228 kestrel boxes on landscape
- 77 boxes occupied by kestrels
- 296 kestrels fledged from those boxes
- 19 banding sessions conducted by Central Wisconsin Kestrel Research program, Kurt Reed, Brand Smith, and Emma Raasch
- 59 adults newly banded
- 295 chicks banded
- Kestrel Rescue:** Four kestrel chicks were rescued after a property owner accidentally tore down their nest. Brand and volunteers constructed and installed a replacement box and worked with two rehabilitation centers to transfer and re-situate the nestlings. Their parents successfully returned.



Kids exploring, learning, and playing during Family Field Trips | photos by Carolyn Byers/Madison Audubon & Mickenzee Okon/Madison Audubon

Summertime family fun

by Carolyn Byers, director of education

After many requests for more kid-centered events, we started our summer Family Field Trip Series in June. Every Thursday morning, we gathered with families and their young kids at local parks. Eight weeks of nature-filled fun!

These field trips are structured like our lessons with classrooms. We gather together at the beginning to say “hi” and swap nature stories. We introduce our topic and learn some cool science facts. We do something to get our hands busy and then play a game! If there’s time at the end, we try to sneak in a nature walk, too.

We love hopping around to different places, meeting folks from each side of town. One family found us because they bought an insect ID book the day before. They looked for insect field trips online and found our Pond Dipping trip at Lake Farm County Park the next day—it was such good

timing! Another family is back in Wisconsin after living abroad for years. They’re hoping to help their kids connect with their new local wildlife.

Most of the people on the trips don’t know each other at the start of the day. It’s fun seeing a new group of kids work together to play a game for the first time. On our scat-tastic field trip (for anyone wondering, “scat” is the science word for “poop”), we played a game where kids were coyotes marking their territory. “Coyotes” who had just met were overheard strategizing (okay, plotting) about how to quickly expand their territory together. It was great!

It has been lovely spending the summer with you, and we’re looking forward to more trips this fall and winter. Keep an eye out for future family adventures and come join us!

Goodbye, dear friend

by Becky Abel, director of philanthropy



Marcia at the dedication of the MacKenzie Overlook at Faville Marsh in November 2022 | Brenna Marsicek/Madison Audubon

We said “goodbye” to a very good friend of Madison Audubon this past July. The Celebration of Life for the force for good that was Marcia MacKenzie was filled with food, wine, laughter, and animals—all fitting tributes.

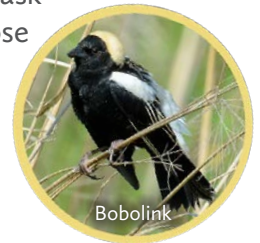
When I say Marcia was a force for good, it’s an understatement. She was passionate about birds, land protection, environmental education, and Madison Audubon. She gave her time, her intellect, her service, and her heart to conservation for years. She was a very active member of the board of Madison Audubon until 2018, but she didn’t stop being involved when her term was up. She read every piece of information we sent out and followed all of our work—especially land protection and fundraising—closely and critically. Marcia believed in fundraising, and she wasn’t afraid to ask anyone and everyone to donate to the causes she cared about. Madison Audubon was at the top of her list.

She donated. She asked for donations. She asked other people to ask for donations. She donated more. She knew that fundraising for conservation is not begging for handouts—it’s asking others to join in the joy that comes from making a difference.

Madison Audubon’s current Faville Grove fundraiser is particularly meaningful to me. The land we’re raising money to protect is visible from Marcia’s dedicated spot at Faville Grove—the MacKenzie Overlook—and she was deeply interested in the success of this puzzle project. The Bobolink token in the upper corner of the puzzle was her

final donation—selected just a few weeks before she passed. She was still thinking of birds, still thinking of Madison Audubon, and STILL giving money to the things she cared about.

I don’t know why she selected a Bobolink, and I regret that I never had a chance to ask her. I actually expected her to choose American Robin, because she and I share a love for the too-often-overlooked charm of robins. I like to think she knew how important this parcel would be for grassland birds, and she wanted a suitable representative for all that would be gained by restoring the 80-acre parcel to native prairie.



Bobolink

Whatever her reason for selecting these black, yellow, and white beauties, I’ll think of Marcia when I look at the puzzle and watch the pieces fill in. I’ll think of her as we fundraise for the land she cared so much about. And I will think of her when Bobolinks increase because of the purchase and restoration of this landscape.

Bobolinks are a great reminder of Marcia. They are a joyful bird. They sing a boisterous, crazy, warbling song while fluttering over their prairie territories—yes, they sing while they fly—drawing attention in the happiest and most unexpected ways.

They’re flashy, yet uncommon.

And they ALWAYS make me think of conservation of important lands.



Learn how you can help add a piece to the Faville Grove landscape puzzle at madisonaudubon.org/puzzle.

It's Make-a-Will Month! *Is your nest in order?*

If birds and Madison Audubon are part of your legacy, we hope you'll let us know so we can celebrate you!

The Kestrel Legacy Circle is made up of dedicated supporters (like Maggie and Bob Honig, on the right) who have named Madison Audubon in their will or estate. Membership is not binding in any way. Your statement of intent simply allows us to thank and recognize you in your lifetime for helping secure the future of birds and land in Wisconsin.

We offer special opportunities to our “Kestrels” so that you can become more familiar with the organization whose work you plan to support long-term. If you prefer not to be publicly listed, you can remain anonymous.

Madison Audubon accepts planned gifts of any amount, in the form of wills, trusts, appreciated stock or other assets, IRA rollovers, life insurance policies, and real estate.

You can speak with your financial advisor about leaving a planned gift to Madison Audubon. Additional information can be found at madisonaudubon.org/legacy.

Written by Becky Abel, director of philanthropy. For more information about planned gifts or the Kestrel Legacy Circle, contact Becky (who is also a Kestrel Legacy Circle member!) at 608-255-2473 x5 or babel@madisonaudubon.org.



A DONOR TESTIMONIAL



Maggie and Bob Honig | David Veselka

“

After moving from Texas to Madison in 2021, we were immediately impressed with the scope, quality, and successes of Madison Audubon's work. As lifelong students of the natural world (we got to know each other while co-leading birdwatching trips and on Christmas Bird Counts!), supporting Madison Audubon was a natural fit. As volunteers, we've been able to see firsthand the positive impact on birds and their habitats, as well as in educating the public.

Managing land and supporting nonprofit staff require financial resources, and that's exactly why we're naming Madison Audubon as a beneficiary in our wills and investments. That way, we can continue supporting these critical efforts after we're gone. And while we're still around, our Frequent Flyer monthly donation makes regular contributions super simple!

”

—Bob & Maggie Honig
Madison Audubon members since 2021, Frequent Flyers, Kestrel Legacy Circle members, dedicated volunteers in several of our citizen science programs, and field trip leaders

COVER PHOTO:
Rattlesnake master at Goose Pond
Sanctuary | Arlene Koziol

JOIN OUR FLOCK FOLLOW US ON SOCIAL MEDIA

 FACEBOOK
[/MadisonAudubon](https://www.facebook.com/MadisonAudubon)

 INSTAGRAM
[@MadisonAudubon](https://www.instagram.com/MadisonAudubon)

 YOUTUBE
[/@MadisonAudubon](https://www.youtube.com/MadisonAudubon)

News about our new name!

MEMBERS: JOIN US FOR A MEETING IN SEPTEMBER

When Madison Audubon's board of directors voted to change our name last December, we were overwhelmed by the support of our members. You emailed, called, chatted with us, sent in surveys. Your feedback was incredibly helpful.

Our name selection committee, made up of board, staff, community partners, and members, was formed to take on the challenging and exciting task of reviewing and narrowing down name selections. They prepared a detailed report with recommended name options, based on their research, for the board to review at their August meeting.



Monarch on showy goldenrod | Nydia Kien

We are excited to share the news that the board has selected a new name to recommend to you, our membership! We wish we could share it right away, but important due diligence must be completed beforehand. To learn more about the process and see updates about the name change, visit our website at madisonaudubon.org/new-name.

At the September meeting, our board and staff will discuss the proposed new name with the membership, and hold a vote of approval.

MEETING FOR OUR MEMBERSHIP: MOVING FORWARD WITH A NEW NAME!

DATE: Tuesday, September 26, 7–8:30 PM

LOCATION: Madison College Mitby Theater, 3550 Anderson St., Madison, WI

RSVP: Required. Members may register at madisonaudubon.org/name-meeting or by calling (608) 255-2473 x2 and leaving a message.