



The wetlands edition

madison
AUDUBON
society



May 2019



Arlene Koziol



Arlene Koziol

Madison Audubon
is your local
Audubon chapter

Together with our members, we work to protect and improve habitat for birds and other wildlife through land acquisition and management, education and advocacy.



**Wisconsin
Wetlands**
ASSOCIATION

Thanks to WWA for some of this info, and check out all the great things WWA is doing for wetlands at wisconsinwetlands.org.

Our wonder

Here's a fun fact: over 75 percent of Wisconsin's wildlife and fish species depend on wetlands for at least part of their life cycle.

May is American Wetlands Month, and we are celebrating the birds, plants, and all the other critters that couldn't make a living without wetlands. And we're celebrating your help in protecting diverse and valuable wetlands at our two sanctuaries.

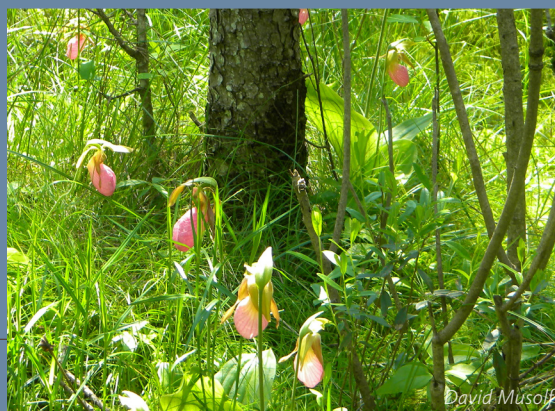
From the birds that nest in the reeds to the frogs that sing along the shorelines, water represents life in natural places.

Wetlands are important far beyond what they provide for wildlife. They are among the most important parts of our landscape for providing natural benefits like flood abatement and clean water. They capture runoff, including stormwater and snowmelt, keeping this water from entering

our neighborhoods and covering our roads. Wetlands also improve water quality by removing sediments and other pollutants before they reach our lakes, rivers, streams, and groundwater. This keeps our waters clean and life-giving.

As you will read on page 4, with this spring's high water, the time and energy that the crew at Goose Pond has spent on wetland restoration paid off in improved habitat and flood mitigation. Likewise, Faville Grove's bogs, marshes, and flood-plain prairies are sanctuaries themselves, with some exciting new additions (page 6). And our stellar education programs share the wonder and importance of wetlands by looking at water quality and critters that live in the muck (page 9).

Wisconsin used to be home to an estimated 10 million acres of wetlands. However, we've lost half



David Musolf



Arlene Koziol



Arlene Koziol

Hannah Sigg

MADISON AUDUBON STAFF

CENTRAL OFFICE

Matt Reetz, *executive director*
Carolyn Byers, *education director*
Brenna Marsicek, *communications director*
John Minnich, *financial manager and membership director*

FAVILLE GROVE SANCTUARY

David Musolf, *volunteer resident manager*
Drew Harry, *land steward*

GOOSE POND SANCTUARY

Mark Martin (*volunteer*) and Susan Foote-Martin, *resident managers*
Graham Steinhauer, *land steward*

MADISON AUDUBON BOARD OF DIRECTORS

Pat Clark
Patrick Eagan
Matt Fortney
Galen Hasler, *vice president*
Joanne Jones, *treasurer*
Susan Knaack
Lisa Lepeak
Roger Packard, *president*
Olivia Pietrantoni
David Rihn
John Shillinglaw
Mareda Weiss
Topf Wells, *secretary*

ful wetlands

of these wetlands to land use changes associated with agriculture, urban development, roads and more.

But most of all, we need you. We need your passion, your voice, and your time to help protect these precious resources for whatever reason is important to you—feathered or otherwise! Share some of Wisconsin Wetlands Association's new videos on Facebook, or call your legislators to emphasize the importance of the Knowles-Nelson Stewardship Program to fund land and water protection. Then, follow that up with a visit to a wetland, and lose yourself in awe.

Brenna

Brenna Marsicek, director of communications
bmarsicek@madisonaudubon.org

The return of the swamp canary

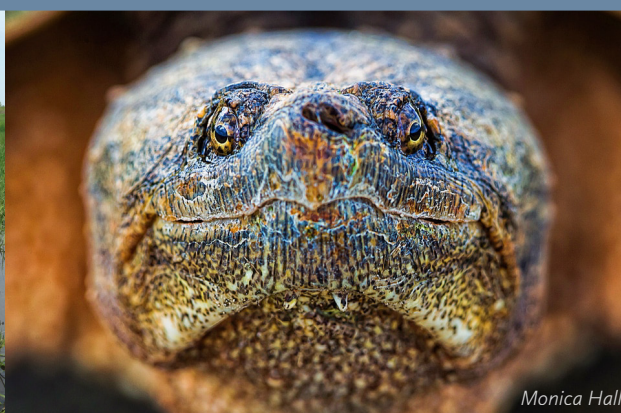
You probably won't be shocked to learn that I have a big soft spot for birds (yes, even brown-headed cowbirds). One of the softest of soft spots is for the prothonotary warbler, *Protonotaria citrea*, a magnificent Wisconsin songbird I got to know firsthand more than 20 years ago (yikes!) during one of my first field jobs.

The prothonotary warbler, also known colloquially as the "Swamp Canary," is a neotropical migrant that breeds in flooded bottomland forests, wooded swamps, and forests near lakes and streams...

continued on pg. 8...



MAS Photo



Monica Hall



Madison Audubon is a proud member of the following organizations:



ABOVE: A bird's-eye view of Goose Pond in March shows the amazing extent of flooding. Photo by Josh Kluge of J 1:9 Aerial Media

At an all-time high

Goose Pond overflows with water this spring

Goose Pond Sanctuary is best known for its water and its waterfowl. If you haven't been out during migration to see the spectacle that is Goose Pond or watched the shores of the new wetland scrapes, make it a priority this year. We spend a lot of time thinking about, working on, and striving to create high quality wetlands, and one of the most important reasons why revealed itself late this winter.

This March, deep snow cover, rain, and high temperatures resulted in record flooding and runoff levels in much of Wisconsin, including the area around Goose Pond Sanctuary. Low-lying roadways were closed or had high water advisories, and a train was stranded on the sanctuary while damage to the tracks was assessed. In the 40 years that the Martins have resided at Goose Pond, water has only flowed west out of the pond to Lake Mendota on one other occasion. Fifty-seven ephemeral springs were counted, last seen in the 1990s. If you really wanted, you could have

paddled from Ankenbrandt Prairie in eastern Goose Pond Sanctuary all the way into Lake Mendota, only getting out to avoid culverts.

You might imagine the damage that amount of water would bring to an area, and indeed there was some. But it brought some good, too! Flooded prairies and agricultural fields provide excellent habitat for wetland birds, amphibians, and mammals. It gives them safe access to cover and food that is not normally available.

Scaup, canvasbacks, redheads, and other diving ducks prefer to feed in water that is three to six feet deep, and Goose Pond is the only water body in the sanctuary that provides such depth in normal years. The extreme runoff flooded at least 160 additional acres of water to three feet deep on or adjacent to Goose Pond Sanctuary lands, effectively tripling the habitat usually available to diving ducks. In fact, 620 scaup were counted at Goose Pond in March, an all-time high since the

Kestrels growing stronger

MAS's kestrel nestbox program continues to expand

Nearly 30 awesome MAS volunteers are monitoring 165 kestrel nestboxes in southcentral Wisconsin this year, making this program one of the largest and strongest of its kind in the country. American kestrels are in decline throughout most of their range, largely due to loss of nesting sites. However, kestrels take readily to man-made nestboxes, and we are doing our part to support them.

Thank you to all our volunteers, particularly Brand Smith who coordinates the program. Keep an eye on our website for our annual kestrel banding events this June: madisonaudubon.org/events.



sanctuary was established over 50 years ago.

As water recedes throughout the growing season, it will provide high quality foraging sites for shorebirds. Amphibian eggs are an energy-packed food source for predators like fish, so tiger salamanders, treefrogs, spring peepers, and others seek out wetlands that dry up seasonally. These ephemeral wetlands at Goose Pond Sanctuary are full, and amphibian reproduction is expected to be excellent this year.

While the primary benefit here is to wildlife, these wetlands do incredible work to store flood

waters that would otherwise wreak havoc on man-made infrastructure. We will continue to capture more water at Goose Pond Sanctuary using water control structures and wetland scrapes, and appreciate your generosity of time and funding that make these ongoing efforts possible. Come out to Goose Pond this spring and experience the riot of sights and sounds that the gift of water brings.

Graham

Graham Steinhauer, land steward
gsteinhauer@madisonaudubon.org

ABOVE RIGHT: A newly fledged kestrel practices its flapping skills. *Photo by Phil Brown* | ABOVE LEFT: Hundreds of lesser scaup took advantage of the floodwaters at Goose Pond Sanctuary this March. *Photo by Mike Bons, mikebons.com*

Bigger and better than ever

Recent acquisitions at Faville Grove offer stunning vistas

See it for yourself!

Later this summer, after the current crop of winter wheat is off of the farmland overlooking the new Springer Pond addition, we plan to host a special field trip to see the gorgeous new properties at Faville Grove.

Watch the MAS website (madisonaudubon.org/field-trips), Facebook page, and emails for details.

For birds and human beings alike, the views keep getting better at Faville Grove Sanctuary. With Madison Audubon's recent acquisitions of two key properties in the western portion of the sanctuary, the vistas are longer and more sublime than ever.

The first is an 88-acre tract along North Shore Road that was sold to MAS at a significant discount by neighbors Ohne and Karen Raasch. Madison Audubon has been working with the Raaschs and the Natural Resources Conservation Service since 2012 to restore this and an adjacent 65 acres that they enrolled in the federal Wetlands Reserve Program.

With the site's drainage ditches filled, wetland scrapes excavated where agricultural erosion had filled in low pockets, fencerows cleared of invasive brush and trees, and agricultural fields restored to diverse prairie, the property makes an instant and

beautiful addition to the sanctuary. Small moraines with sandy soils and dry-mesic prairie restorations overlook shallow wetlands. A small knoll on the south end of the property is home to mature bur oaks and a rare glade of scattered eastern red cedars, which will provide interesting opportunities for botanical restoration. Our work this past winter clearing brush along North Shore Road opened expansive vistas to all who pass by.

It is very nearly two miles from the south edge of this acquisition to the north end of the second recent acquisition, with *all* the land in between under sanctuary management. The second property of 63.3 acres, which includes the entire north end of Faville Marsh, is approximately 17 acres of open water and seasonally emergent vegetation, known locally as Springer Pond, as well as a three-acre piece of floating sphagnum bog.

The parcel also includes farmland that surrounds the wetland on three sides, and it connects the sanctuary to Springer Road and Hillview Lane on the north.

The vistas from the farmed moraines looking south are already incredible, with sanctuary land nearly as far as the eye can see. Over the next several years, as we restore the uplands to prairie and remove the walls of



ABOVE: Looking north with the floating bog of Faville Marsh in the foreground, the new Springer Pond addition can be seen at the top-center, including a three-acre detached piece of bog, and surrounding farmland with brushy field edges. *Photo by Rob Couey*

invasive brush on the marsh edge and property lines, we're excited about how those vistas will expand.

By restoring prairie around the marsh, we will further protect the wetland from agricultural runoff and expand nesting habitat for waterfowl and grassland birds. The young prairie restorations on the new 88-acre property to the south hosted a recent irruption of dickcissels, with dozens of birds nesting in the forb-rich prairies. Perhaps future restorations surrounding Springer Pond will invite the next large influx of

dickcissels to the area.

A scenic and ecological restoration as large and comprehensive as the Faville Grove effort in southern Wisconsin's fragmented landscape is a rare thing indeed. It is something that all Madison Audubon members can be proud of.

Roger Packard, David Musolf, and Drew Harry, Faville Grove Sanctuary crew
faville@madisonaudubon.org



It's Birdathon time!

Birding, fundraising, and fun, all in one

Want a good excuse to get outside this spring? The Great Wisconsin Birdathon is in full swing, and it's not too late to join. This walkathon-style activity gets you outside and birding, while raising donations that are split evenly between Madison Audubon and the Bird Protection Fund through Natural Resources Foundation of Wisconsin. It's easy, fun, and brings in needed support for these organizations and creatures you love.

TO JOIN AS A TEAM:

- 1 Visit madisonaudubon.org/birdathon and fill out the form, create your fundraising page, and contact friends and family to sponsor you.
- 2 Plan your route, get out and bird by June 15, keep track of the birds you see, and have fun!
- 3 Send your checklist in, thank your donors, and know the fruits of your birding efforts are going to good use protecting birds in Wisconsin.

TO DONATE TO A TEAM:

- 1 Visit madisonaudubon.org/birdathon-donate and either search the list or the map to find a team supporting Madison Audubon Society.
- 2 Click on the team's name, and the big Donate button, and set your pledge amount.

THANK YOU FOR YOUR SUPPORT. YAY BIRDS!



TOP: Dickcissels enjoys the native habitat found at Faville Grove Sanctuary. *Photo by Arlene Koziol* | ABOVE: A young birder scouts the UW Arboretum for a new species to check off her list. *MAS Photo* | BACKGROUND: Cardinals are just one species you could find during your Birdathon day. *Photo by Arlene Koziol*

DID YOU KNOW?

The prothonotary warbler's mouthful-of-a-name is derived from the vivid yellow robes worn by clerks of the College of Prothonotaries in the Roman Catholic Church.

Prothonotary warblers galore!
TOP: Nothin' to see here, just gorgeous yellow plumage in the forest. *Photo by Jeff Bryant* | BELOW: This male overlooks his beloved wetland. *Photo by Jeff Bryant* | BOTTOM: Peek-a-boo! A woodpecker hole makes for a great natural nesting spot. *Photo by Andy Reago and Chrissy McClarren*



Continued from page 3

...just like the ones in the Cache River wetlands of southern Illinois. My summer days in the Cache were largely spent navigating ankle- to waist-deep swamp water to monitor hundreds of prothonotary nests. The days were long, hot, buggy, and always extremely interesting.

Unlike most warblers, prothonotaries nest in natural tree cavities, or for us, half-gallon cardboard milk cartons spray-painted brown and taped either to a tree or to poles we pushed into the muck. In addition to easy monitoring of nest status, these boxes provided a treasure trove of data including information on predation, clutch sizes, feeding rates by adults, nestling growth, cowbird parasitism, nest site fidelity, and so much more. A box with an active nest also gave us the opportunity to band both the young and adult birds, which reminds me of one of my favorite field stories.

One sunny summer day, we set out to catch a male using a mist net, playback of its *zweet-zweet-zweet* song, and a decoy painted bright yellow to look just like a prothonotary. As soon as the cassette player started turning, the male swooped in and perched above us, vigorously counter-singing at the mystery intruder. Aha! The

perfect time to place our yellow decoy in the net for the male to dive bomb. ...Except we left it in the truck, 35-minutes away up the bluff. What to do? Time to improvise. I'm proud to say we caught the male that day, my friends, thanks to a bagged lunch that included a nice, ripe, bright yellow banana.

Fun anecdotes aside, one of the insights we gained from this research is that human alterations to ecosystems have significant negative effects on prothonotary warblers. Drainage and rerouting of water in the Cache River wetlands, for example, alters the water levels around prothonotary nests so drastically that they fail at incredibly high and unnatural rates. On a broader scale, the prothonotary warbler has declined 40 percent since the 1960s, partly due to the degradation and disappearance of the precious wetlands it needs to survive and reproduce.

So, this May, I invite you to join me in celebrating the triumphant annual return of the swamp canary to Wisconsin, as well as all of the wonderful wetland habitats that make its survival possible.

Matt

Matt Reetz, executive director
mreetz@madisonaudubon.org

The joyful exploration of muck

Wetlands provide a wonderful learning experience for all ages

Wetlands are one of my favorite classrooms to teach in. They're full of animals, plants, and insects that kids don't usually encounter. Their level trails and boardwalks are generally easy to traverse. And most importantly, they're kind of gross. Wetlands have slime, they can smell in the summer, and have plenty of mud. Kids LOVE wetlands!

Wetlands generally encourage kids to touch and feel and explore. They want to lie on their stomachs to peer through the boardwalk cracks at frogs. Cattails are begging to be touched, and mud demands a footprint. You can just see the wheels turning in a child's head as they explore a wetland. Curiosity sparks questions, and kids who question are well on their way to becoming people who experiment, test boundaries, and crave more information. Scientists and artists, really.

Here are some ideas for getting the kids in your life excited about wetlands:

- 1. Explore water critters.** Grab a clean bucket (make sure it's free of soap residue too) and dip it into your favorite body of water. Look closely, as some organisms are almost too small for our eyes to see! Use a magnifying glass, or even flip your binoculars around for a closer look (you need to get the eyepiece within a half inch of the object you want to view). Do you find the same critters in open water and in weedy places? How about in moving water or standing water? Make sure to release your critters quickly, exactly where you found them.

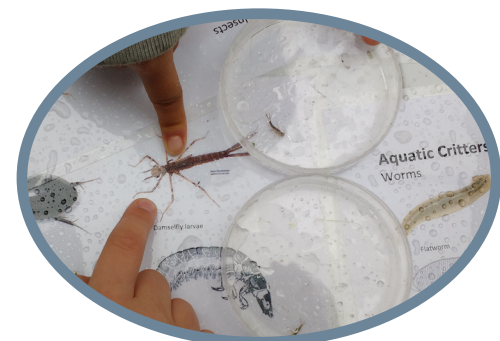


- 2. Listen for frog calls.** You can identify frogs by their singing – just like birds. Become citizen scientists by collecting data for the WDNR's Wisconsin Frog and Toad Survey. The survey periods are coming up in May, June, and July. Or download our Wisconsin's Frogs and Toad soundtrack, found at madisonaudubon.org/store.
- 3. Learn alongside the kids.** Wetlands are great spots to find insects, tracks, scat, birds, and plants that you've never encountered. Show the kids that you're a lifelong learner by asking your own questions, saying "hmmm... I don't know!" and brainstorming possibilities. Letting kids see how you work through a problem is a great learning experience for them, even if you can't ultimately figure out what you're looking at. Particularly if you're willing to get your hands muddy, too.

Really, wetlands make your job as a door-opener, experience-giver, and memory-maker easy. Bring the kids to the water, and the mysteries held within the wetland will do the rest.

Carolyn

Carolyn Byers, education director
carolyn.byers@madisonaudubon.org



Your love of birds can shape the future!

Remembering MAS in your will or estate plan honors a commitment to our natural world and provides support that will protect Wisconsin's amazing birds and share nature with our kids and grandkids forever. We invite you to become a part of our planned giving recognition group, the Legacy Society.

There are many ways to create a legacy gift. Give Matt a call at (608) 210-1441 and we will help find the perfect solution for you. Learn more at: madisonaudubon.org/legacy-society

If you have already named MAS in your estate plans, we'd love to thank you and invite you to join the Legacy Society.

Thank you to our major education donors:



CAERUS
FOUNDATION, INC

Theda & Tamblin Clark Smith
FAMILY FOUNDATION



DONOR ROLL

Thank you to those who donated January-April 2019

Nancy Abraham
Kiva Adler and Bil Alverson
Mary Albrecht
Irma Almazan
Amy Alstad
Kathleen and Mike Anderson
Mary Anglim
Richard and Alice Appen
JD Arnston
Barbara Arntz
Cindi Bannink
Lee and Laurie Bartolini
Janet Battista ^{FF}
Marvin and Virginia Belveal
Judi Benade
Barbara Benson
Laura Berger
Diane Berry
Daniel Bjerre and Sarah Best
Larry Braatz
Sharon Brancel
Mary Braskamp
Rebecca Brockman-Schneider
Laura Brown and Mark Shahan
Dolores Buchler
Stephen and Mary Burrell
Clarence Cameron
Joy Cardin
Bill Cary
Drew Cashman
Jennifer and Marc Chipault
Abigail and Lynn Christiansen
Jessica Cioci
Pat Clark
Lois Clifcorn
Joseph and Susan Cline ^{FF}
Joseph and Barbara Corry
Carson Culver
Mary Ann and Michael Damm
Dick and Jane Dana
Dawn Danz-Hale
Linda Degnan
Diane Dempsey
Neal Deunk
Ulrike Dieterle
Kathryn and Fred Dike
Robin Downs
Gretchen Dresen
Doris Dubielzig
Linda Dunn
Linda Duychak
Johanna Fabke
William and Colleen Feist
Peter Fissel
Beverly Flanigan
Margaret Fleischli
Janet Flynn and Greg Tiedt
Julie Foertsch
Judith and Alfred Foskett
Gary and Jana Funk
James and Audrey Fusek
Kay Gabriel and Fiona McTavish
Steve Gasser
Tyler Gatti ^{FF}
Gretchen Geist
Francis and Marianne Genter
Christina Getty
Chris and Melissa Gibson ^{FF}
Patricia Giesfeldt ^{FF}
Kennedy Gilchrist
Carol Gillen
Georgia Gomez-Ibanez
Karen Rose Gredler
Jo Grogan
Tom and Pat Grogan
Susan Gruber
Jacob Guajardo and Jody May
Gerald Gunderson
David Gunnulson
Ebbie and Jody Hakdke
Eric Hamburg
Jay Handy

Vicki Hansell
Rita Harris
Barry Hart
Pamela Heaney
Diane Hebel
Dennis and Frances Heisey
Christine Hess-Molloy and James Molloy
Brad and Pam Hext
James Higby
Caroline Hoffman
Karen Holden ^{FF}
Nancy Ishikawa
Suzanne Jacobs
Marsha Janota
Denise Jess and Jani Koester
Jeannine Johnson
Joan Johnston
Tony Kalenic
Dorriane Kalish-Huza
Joanne Kanter and Karen Gunderson
Susan Kau
Laura Kearney
Chuck Keleny
David Kelso
Amanda Kemnitz
Dave and Teri Kinney
Rachel Klingler and Peter Winkles
Robert Klipstein
Michael and Rebecca Klosowski
Lynn and Jane Knutson
Anne and Paul Koeppel
Oma Kortsch
Janice Krane
Bonnie Laviron
Robert and Betsy Lee
Terri Lefebvre and Joe Campshure
David and Cheryl Lemke
Lisa Lepeak ^{FF}
Leann Lindemann
Ellen Lindgren
Emily Link
Gabriele Lubach
Pat Maddox
Mary Makarushka
Laura and Paul Manriquez
Colleen Marsden and Holly Anderson ^{FF}
Brenna and Jeremiah Marsicek
Mark Martin and Sue Foote-Martin
Jerry Martin
Alison McDole
Mark and Jenny McGinley
Bonnie McMullin-Lawton
Susan McMurray
Thomas Mecum
Emily Meier ^{FF}
Rose Meinholz
Gail Merkel
Michael Meton
Tess Meuer
Dianne Meyer ^{FF}
David and Ann Moffat
Lucy and Bruce Moore
Sara Moore
Aimee Mousel
Lois Nelson
Beth Newman
Diane Nissler
Larry O'Brien
Phil Oren
Alice Packard
Maria Parrott-Ryan
Andrew Paulios
David Pausch
Mary Pautz
Rebecca Payne
Leslie Paynter
Ronald Perkins

Joan Peterson
Waldo Peterson
Clara Pfeiffer
Jeff Pieterick
Catherine Pietri
Lori Pike
Linda and Chuck Pils
Eugene and Carol Pribnow
Ohne and Karen Raasch
Katherine Rasmussen
David Ray
Jim Refsguard
Marilynn Reichel
Thomas Reif
Bob and Peggy Ridgely
JoAnn Riecke
David Rihn and Valerie Bailey-Rihn
John Roberts
Elizabeth and David Roettger
Barbara Constans and Deb Rohde
Larry Sallee
Susan and Donald Savage
Dorothy Schappel
Jeanne Scherer ^{FF}
Stephanie Schmidt
Diane Schorr
Chris Schulte
William Seno
Gary and Penny Shackelford
John Shillinglaw
Jim and Kathy Shurts ^{FF}
Dale and Lois Simon
Pam Skaar
Mike and Nancy Sloan
Jeanne Smith
Guy and Eileen Somers
Nancy Stanford
Victoria Stauber
Jim Stewart
Patricia Stinger
Tracy Topalian
Rebecca Tradewell
Janet Tuccinardi ^{FF}
Deborah and Patrick Turski ^{FF}
Eldon Ulrich
Judith Utevsky
Linda Van Brocklin
Paul Van Ginkel
Michael Vander Veen
Rose and Tony Vrtis
Lila Walsh
Christa Walters
Jeff and Julie Wanous
Kenneth Warren ^{FF}
Mary Washburn
Rob Washenko and Mary Fahey
Gaby Weldy
Christine Wenc
Hannah Wente
Laura Wentz
Shahla Werner
Kathleen Wessels
Marilyn Westmas
Patrick and Gina Wherley
Barney White
Jeffrey and Carol White
Dick Wieboldt
Nancy Wiegand
Molly Wight
Robert Philbin and Carol Wilson ^{FF}
Emily Winecke
Jim Young ^{FF}
Martin Zechman
Cristina Zepeda-Almazan

Amazon Smile
Home Savings Bank
James E. Dutton Foundation
Friends Of The Lakeshore
Nature Preserve

DONATIONS IN HONOR OF...

Sharon Kessel
by Sue Milch and Wilt Sanders

Linda Schudlach
by UW Hospitals and Clinics Authority

Brand Smith
by Alliant Energy Foundation

DONATIONS IN MEMORY OF...

Lillian Damon Anderson
by Catherine Ahrens
Megan and Nelson Donovan
Cynthia Emerson
Matthew and Anne Hughley
Gregory and Jill Johnson
William and Judy Johnson
Barbara Nilsson
Peter Reichman
Rebecca Sandborg
Caroline Spencer
Donna Traaseth

Susan Connell-Magee
by Kevin Magee

Patricia Eichstaedt
by Jill Sobek

Loretta Falkowski
by Maria Cassera

Charles Loufek Kimport
by Nancy Hylbert

Fred Kruger
by Eugene Knudson

Robert Messer
by Pearl Messer

Phil Miles
by Elizabeth Shapland

Steven W. Miller
by Deborah and Richard Loerke

Howard Richard
by Beverly Schwantes

Lynn Schten
by Jerald and Carolyn Young

Lucille Stephani
by Lynn and John Stephani ^{FF}

David Tillotson
by Diane Pick

Jim and Laura Tyndall
Marilyn Meade

Leonore Weber
by Lorraine Weber

IN KIND DONORS...

Aleta and Duane Barmore
Dorothy Haines
Monica Hall
Arlene Koziol
Eli Woyke

Join the Frequent Flyers monthly donor club! Members are noted with an FF marker. More info is available at madisonaudubon.org/take-action

A gift to monarchs

Give them what they want: more native milkweed

Planting milkweed is the single greatest thing you can do for monarchs. Did you know that monarchs will *only* lay their eggs on milkweeds, and their caterpillars will *only* eat milkweed leaves (with a few rare exceptions)? This diverse family of plants has gotten a bad rap over the years because some milkweeds reseed and spread like crazy. However, if you have a wide open space you're looking to fill, or want to take the time to find the right species for your garden, you have great options in the milkweed family!

Monarchs have declined by approximately 90% over the last 20 years, and most of that has to do with habitat loss. While other

factors like pesticide use, climate change, and deforestation play a role, the lack of places to lay eggs and raise young is the greatest limiting factor.

The Wisconsin Monarch Collaborative, a group of agencies, industries, non-profits, and individuals working together to protect the monarch butterfly, just published a guide to the 12 native milkweed species in Wisconsin. Madison Audubon took the lead in creating content for and designing the resource. Find a milkweed or two that is right for your yard, and help a monarch today! Download the PDF at madisonaudubon.org/monarchs.



Madison Audubon is a founding member and proud supporter of the Wisconsin Monarch Collaborative. Learn more at wimonarchs.org.

GIVE TODAY!

Your generosity funds important conservation and education programs throughout south-central Wisconsin

Yes, I'd like to support Madison Audubon, my local chapter!

Gift amount: _____

Name(s) _____

Address _____

Email _____

Name(s) _____

Address _____

Email _____

Check to Madison Audubon enclosed

Pay by Visa MasterCard

Name on card _____

Card # _____

Expiration Date _____

Three-digit code on card back _____

I would like to find out more about Madison Audubon's Legacy Society. Please contact me!

MEMBERSHIPS

If you are a member of both Madison and National Audubon (One Audubon), please renew at audubon.org/take-action or call 1-844-428-3826. Thanks for your additional gift to Madison Audubon!

If you are a member of Madison Audubon only, your gift of \$20 or more above will renew your membership for one year.

PLEASE RETURN THIS FORM TO THE ADDRESS ON PAGE 16, OR GIVE ONLINE AT madisonaudubon.org

BACKGROUND: A monarch caterpillar munches on a native swamp milkweed. Photo by USFWS Midwest | LEFT: This is why the wetland birds sing: because your support means the world to them. Photo by Monica Hall



Conk-la-ree! Keep this bird singing

Summer is a great time to support birds. They're here, they're loud, and they're proud. Please watch your mailbox for our mid-year appeal and donate to support local birds, habitats, and kids. Thank you!

Madison Audubon sends only two mailed requests for donations each year, one in May and one in November. Thank you for your support.

GO BIRDING IN BELIZE WITH MADISON AUDUBON AND HOLBROOK TRAVEL

MARCH 8-15, 2020

Want to get away next winter? Come exploring with us! On this exciting eight-day expedition to Belize, set your sights on hundreds of neotropical species with the help of our expert guides. Enjoy birding in the pine savannas and wetland habitats of Crooked Tree Wildlife Sanctuary, in the primary and secondary tropical moist forest at Cockscomb Basin, and in private reserves, a botanical garden, and along the Macal River Valley.

Participate in several talks with members of the local community about these efforts, the training programs, and other activities that promote birding tourism as a viable option for local economic development.

Registration costs include a small donation to Madison Audubon.

TRIP DETAILS, COSTS, AND REGISTRATION AT:
holbrook.travel/madison/bz-20



ABOVE: Un-Belize-able! This gorgeous yellow-headed parrot is just one of the many amazing sights you can see next March.
Photo provided by Holbrook Travel.

Don't miss these events this summer

Watch madisonaudubon.org/events for more information.

Kestrel banding
Mid-June



Pat Eagan

National Pollinator Week Jun. 17-23



Arlene Kiziol

Art on the Prairie
June 22



MAS Photo

JOIN OUR FLOCK!
FOLLOW US ON SOCIAL MEDIA



FACEBOOK
[/MadisonAudubon](https://www.facebook.com/MadisonAudubon)



INSTAGRAM
[@MadisonAudubon](https://www.instagram.com/MadisonAudubon)



TWITTER
[@MadisonAudubon](https://twitter.com/MadisonAudubon)